



Korea
Educational
Broadcasting
System



Korea
Educational
Broadcasting
System

281, Hallyuworld-ro,
Ilsandong-gu, Goyang-si,
Gyeonggi-do,
Republic of Korea

<http://global.ebs.co.kr>



Korea Educational Broadcasting System (as of Sep 2017)



Channels

Terrestrial channels :

EBS1, EBS2, FM Radio

Satellite & Cable channels :

EBS Plus1, EBS Plus2, EBSe, EBSU, EBS America

Online services

www.ebs.co.kr

www.ebsi.co.kr [CSAT]

www.ebse.co.kr [English]

www.ebslang.co.kr [2nd languages]

www.ebsmath.co.kr [Math Education]

clipbank.ebs.co.kr

Introduction

Contents

Introduction	06 Vision 07 History
Channels	10 EBS1, EBS2, FM 11 EBS Plus 1, 2·EBS English·EBSu·EBS America
Programs	14 Preschooler & Children Program 16 Documentary 18 Culture & Educational Knowledge Program
e-Learning	22 Internet & Mobile Services
Global	24 Global EBS 28 EIDF

EBS, Korea Educational Broadcasting System,

is a public broadcasting company that aims to inform, educate, engage, and enlighten people for all walks of their lives. EBS provides lifetime education and is determined to grow into a global educational broadcasting company for public and lifelong education.

Vision



EBS, a global education media group, creating advanced contents

EBS aims to complement public education and provide life-long education to its people. As the educational broadcasting system, EBS provides top-notch programs for the public through continuous innovation. EBS is dedicated in creating educational content to enhance public education and to reduce unnecessary private education costs. As a leading educational broadcasting system EBS offers an equal access to education for the public through interactive e-Learning system and customer-oriented services.



History



Mar. 1974	Launched Radio School
Sep. 1980	Launched "TV High School Educational Broadcasting"
Dec. 1990	Found Educational Broadcasting Services
Feb. 1995	Joined ABU
Jan. 1997	Educational Broadcasting Service Act
Aug. 1997	Launched two Satellite TV Channels (EBS+1, EBS+2)
Mar. 2000	Announced Educational Broadcasting Service Act
Dec. 2000	Launched EBS Internet Service (www.ebs.co.kr)
Nov. 2001	Launched EBS DTV (HLQL-DTV)
Apr. 2004	Launched Internet CSAT (www.ebsi.co.kr)
Aug. 2004	The 1st EBS International Documentary Festival (EIDF)
Jul. 2005	Launched EBSu DMB
Jul. 2006	Launched EBSlang (www.ebslang.co.kr)
Apr. 2007	Launched EBS English Satellite Channel
Jan. 2008	Signed MoU for Digital Multi Headquarter with Gyeonggi-do
Dec. 2008	Launched EBS TV real-time broadcasting via IPTV
May. 2010	Launched Education Digital Resource Bank
Apr. 2012	Launched the world's first Dual Stream pilot service using 2D and 3D
Jul. 2012	Launched Internet EBSu (www.ebsu.co.kr)
Mar. 2013	Launched Internet EBS Math (www.ebsmath.co.kr)
Feb. 2015	Began Pilot Service for EBS2 (New Terrestrial Channel)
Sep. 2017	New Headquarter in Ilsan, Gyeonggi-do

Channels

EBS1	A terrestrial channel for premium documentaries, preschool and youth programs, and lifelong education
EBS2	A terrestrial channel for primary and middle school education, and multicultural families
EBS FM	A radio channel for reading programs, foreign language education and cultural content
EBS Plus 1	A CSAT preparation channel for high school students
EBS Plus 2	A satellite channel mainly for elementary and middle school education support and vocational training
EBS English	A channel for English Education
EBS U	A channel for preschoolers and children
EBS America	A premium educational broadcasting channel for Korean in the U.S.A.

EBS, Korea Educational Broadcasting System,

EBS's multi-way broadcasting via TV, radio, IPTV, satellite TV, and mobile, empowers the benefits of education to anyone, anytime, anywhere.
Enjoy EBS programming on 8 special channels.

EBS envisions a world where everyone, regardless of their ages, receives the advantages of education. EBS is a broadcasting company that realizes people's dream.

Terrestrial TV

EBS1

Channel for All Ages from Children to Parents

EBS 1 offers award winning children's programs and globally recognized documentaries for all age groups. Creative programs for EBS1 is provided to support public education; to help reduce private supplementary education costs in Korea and establish a better public education framework.

EBS2

Build Creativity for Future and Bridge Education Gap

EBS2 is a newly launched terrestrial MMS channel. EBS2 is dedicated to education programs for primary and middle school students, English education programs of different level and subjects and programs dealing with unity and multiculturalism.

EBS FM

Radio Channel for Bookworms

EBS FM reads entertaining and educational stories. EBS FM provides a chance to find out true joy of life as well as acquire valuable knowledge by reading. The best companion for reading books as a way of life.

Satellite & IPTV



CSAT Preparation Channel for High School Students

EBS Plus 1 provides the highest quality CSAT lectures with the best teachers in Korea. Every year, it best reflects changes in high school curriculum. It is a Korea's most trusted and leading CSAT preparation channel.



Channel for Middle School and Vocational Education

EBS Plus 2 provide educational contents for elementary school to middle school students for academic knowledge, creative thinking and character development. By providing free and equal opportunities, EBS Plus 2 aims to nurture future generation.



Channel for Quality English Education

EBS English broadcasts English programming for all age groups. It is a specialty channel that makes English education possible for everyone with little to no cost.



Channel for Preschoolers and Children

EBSu HD realize children's dream by offering globally recognized educational contents. EBSu will be a partner for the parents to make a prosperous future for their children.



EBS for Koreans in the U.S.A.

EBS America was launched in 2006 so that people in the US can enjoy EBS programs. Koreans in the U.S. can watch award winning EBS programs twenty-four hours a day.

Programs

EBS's competitiveness comes from diverse programs

EBS has long history of creating nationally and globally recognized educational programs.

EBS acknowledges the importance of lifelong public education and supports the lifelong education with quality programs for all age groups.

Preschoolers & Children

EBS develops high quality animations and entertainment programs so that preschoolers and children grow to be the leaders of tomorrow with creativity.

As of Aug.2017, about 31% of EBS1 programs are designed for preschoolers and children.

Characters created by EBS are the best teachers and friends for children.

Programs at a Glance



Tok! Tok! BoniHani

One of the most popular children's entertainment program in Korea designed to develop creativity of the children.



Let's get together Ding Dong Daeng

A musical TV show for kids and teens. BeongaeMan and his crew delivers the most important lessons to kids through musical.



Fire Engine Ray

Ray, the firetruck goes around the town to save children from danger being a security guard of town's children.

Documentary

EBS offers an extensive line-up of documentaries on a diverse subjects from nature and history to various cultural themes. EBS has received numerous awards and accolades for its nature documentaries since the 1990s, and it is expanding its line-up to include 3D and UHD(4K) documentaries.

**Documentaries are one of the most famous
EBS programs of all.
EBS believes that documentary is
one of the best ways to
deliver in-depth knowledge
to its audience regardless of subjects.**

Programs at a Glance



Lost Humans

The lives and uniqueness of prehistoric human species are examined. The lives and survival tips of each unique human, from tiny midgets to tall giants, are brought back to life through advanced computer graphics, realistic reenactments as well as profound and professional assessments of world-renowned experts in the academia.



Qin Shi Huang, The King of Eternal Emprie

Qin Shi Huang pulled off the stupendous feat of unifying China for the first time. The misconceptions and truths about the life of this hero and legend are uncovered and his enigmatic mausoleum, a gateway to a history and civilization 2,000 years old is explored. documentary. In 2016, it won ABU Documentary Prize.



Myanmar, Ancient Mysteries Revealed

It is a coproduced documentary. With MRTV4 of Myanmar, it discovers the ancient mysteries of Myanmar. It won the Best TV Programme on Reviving Culture Heriatge of AIDB in 2016.

Culture & Educational Knowledge

Knowledge and information are becoming more important in all areas of today's society.

Faithfully carrying out its duty as a public broadcasting network, EBS provides everyone with the knowledge and information needed for 21st century.

Acquiring knowledge could be fun.
EBS produces fun and active culture and educational knowledge programs for all age and for all ethnic groups, including multi-cultural families in Korea.

Programs at a Glance



Morning Special

Early morning English radio program of EBS FM. From music to global news, Morning Special talks about variety issues.



Multi-cultural Mother-in-law and Daughter-in-law

The program aims to close cultural differences between a foreign daughter-in-law and a Korean mother-in-law. Mother-in-law visits home country of her foreign daughter-in-law to experience the new and exotic culture.



Doctors

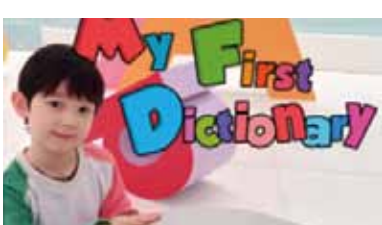
By following the footsteps of doctors, the program provide quality information about various diseases and proper treatment.

e-Learning

**Regardless of platforms,
people can enjoy EBS contents**

At EBS, access to education is available to everyone at anytime. High quality educational content is delivered via different media, anytime, anywhere.

Internet & Mobile Services



For Math Education :
www.ebsmath.co.kr

EBS Math is dedicated to delivering fun math education so that students can enjoy learning math.

For All, the CLIP BANK :
clipbank.ebs.co.kr

EBS Clip Bank is a data base. A data base for educational contents for all learners. From elementary school students to adults, EBS Clip Bank offers most necessary video clips and images for in-class and out-of-school usage. It aims to promote self-study and reduce private education costs. It also supports public school teachers by offering class materials.

For CSAT, the College Entrance Exam :
www.ebsi.co.

EBS is specialized in offering lectures for CSAT. With the most renowned teachers in Korea, EBS produces the best study materials for CSAT. Students can customize lectures in accordance with their academic level.

For English Education:
www.ebse.co.kr

EBS English is a specialized online service for English Education. Users can customize lectures fit to their levels and learn English anytime anywhere.

For Foreign Language Education :
www.ebslang.co.kr

EBSLang is paid-language specialized online planform. Including English, it offers lercutres on 19 languages. By offering uition refund system, it encourages learner's motivation.



Global EBS



The world 's leading cooperation partner in education

The value of EBS's educational content is recognized worldwide.

Through global co-production, contents sharing
and knowledge exchanges,
EBS is reaching out to the world.

Global Partnership & Recognition



International Awards

World famous festivals and rewards have recognized documentaries and children's programs of EBS.

Documentary <Earth, Our Only Planet> AIBD (2017)
 Documentary <Lost Humans> WorldFest (2017)
 Children's Program <Tell Me Bonggu II> Japan Prizes (2016)
 Documentary <Baby on the Way> Japan Prizes (2016)
 Documentary <Green Animal> ABU (2016)
 Documentary <Myanmar, Ancient Mysteries Revealed> AIBD (2016)
 Documentary <Family Shock> selected at INPUT (2015)
 Documentary <Parasite> Sichuan TV Festival (2014)
 Documentary <Birds of Paradise> screened at STVF (2014)

International Sales

EBS's best programs are sold and aired around the globe

Documentary <Qin Shi Huang, the King of Eternal Empire> Smithsonian Networks (2017)
 Documentary <Moment> Arte, Rai3 (2017)
 Documentary <The Roots of Mankind, A Quest for Beginnings> Lai (2016)
 Documentary <Travelogue Earth> Hunan TV (2016)
 Documentary <The Physics of Lights> Netflix (2015)
 Documentary <Snakes – Secrets of Nature's Deadliest Creatures> Smithsonian Channel and ARTE (2015)
 Children's live-action program <Let's Get Together Ding Dong Dang> CETV (2014)
 Documentary <Myanmar, Ancient Mysteries Revealed> Smithsonian Channel (2014)
 Documentary <The Physics of Light> PBSd (2014)
 Documentary <Ancient Splendors of Rome> RAI, NHK and ARTE (2014)

International Coproduction

EBS works with many global partners to create meaningful and valuable programs.

Documentary <The Best 21st Century Parents, You Can Be> (w.t.) Doordarshan and 5 others
 Documentary <Way to School> VTV7 (2016)
 Documentary, 4K <The Emperor's Eternal Empire> SMG (2016)
 Documentary <Big Bang China> Hunan TV (2016)
 Documentary <The Origin> Hunan TV (2016)
 Documentary <Myanmar, Ancient Mysteries Revealed> MRTV4 (2014)
 Documentary <The Life of Ghobi> MNB (2012)
 Documentary, 3D <Ankor, the Land of Gods> TVK (2011)
 Documentary <Ice Race> NRK (2010)
 Documentary <Fiore and Lias> NRK (2008)
 Animation <Friend Papie> France 5 (2008)



EBS Model Knowledge Sharing

EBS's unique educational broadcasting model is popular around the world. Many developing countries are implementing Educational Channels to boost growth with Education

Cambodia Apsara TV (2017)
 Vietnam VTV7 (2016)
 Chile TVN (2015)
 Colombia RTVC (2013)

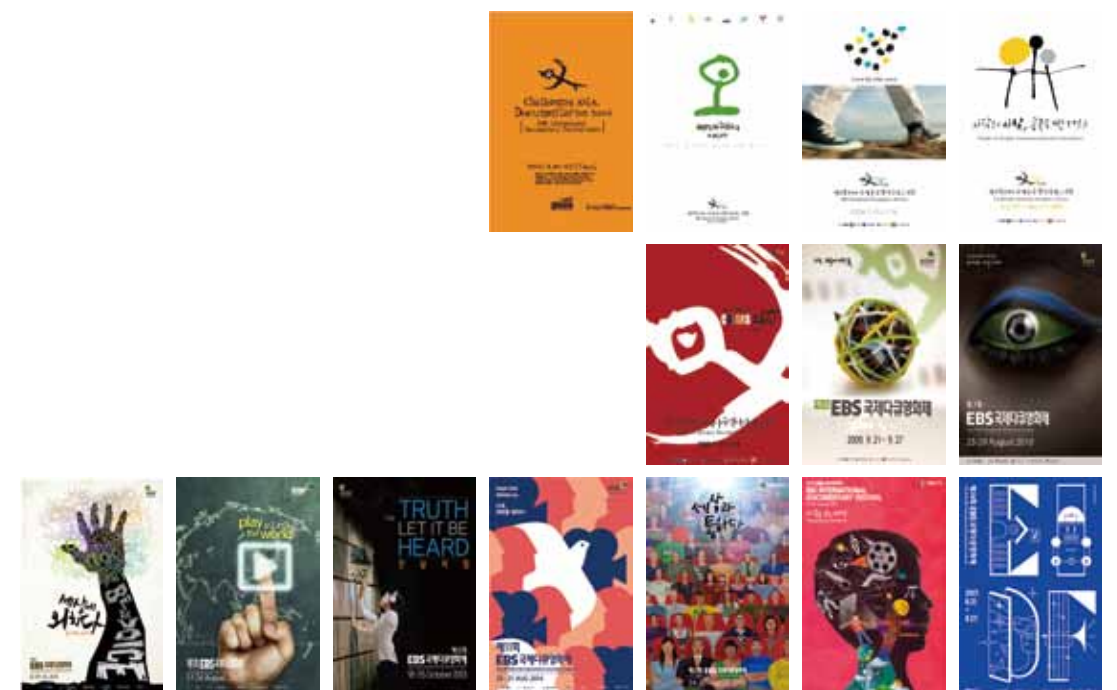
EIDF

EBS International Documentary Festival

Since its launch in 2004, EIDF is becoming one of the most famous documentary festivals in Asia. It presents diverse cultural perspective through a variety of documentaries.

EBS launched its first EBS International Documentary Festival under the theme of 'Challenging Asia' in 2004.

It had been the only documentary festival in the world with TV broadcasting and cinema screening. By organizing master classes and workshops during the festival, EIDF has provided artistic inspirations and practical training opportunities to documentary producers.



Your Education Partner

